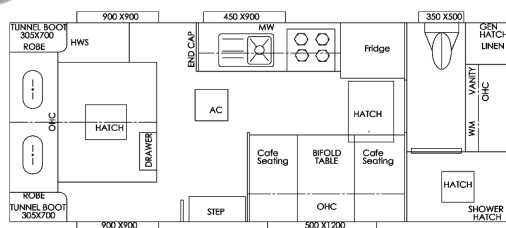
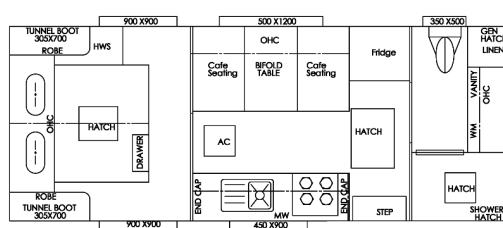


Layouts

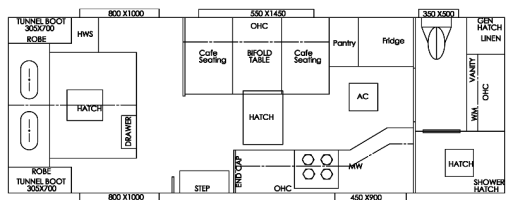


180C

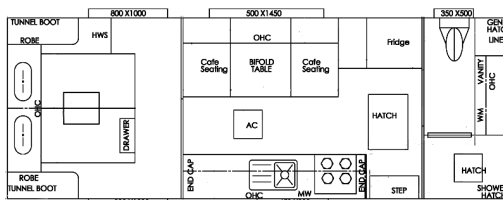
Please note that the 180C has 16" Wheels 12" Brakes



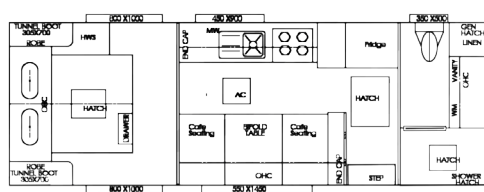
190R



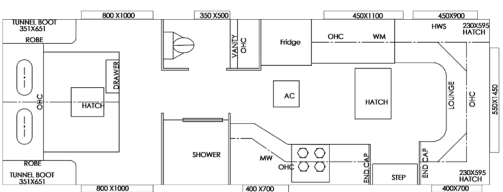
206C



206R

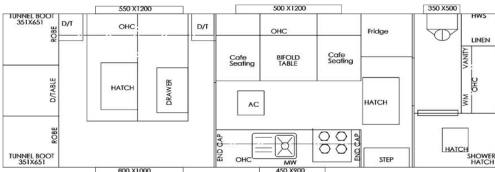


206R



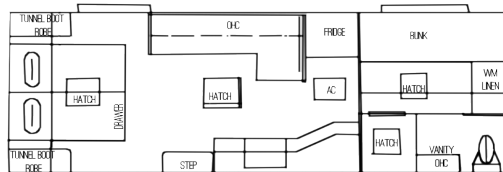
22R

Please note that the 22R model comes with 2 x Rear External Hatches and a 4" Raiser



22R

Please note that the 22R model comes with a 4" raiser



226C (Family)



www.vacationercaravans.com.au

Dealership:

ROADTRIP

VACATIONER ROAD TRIP



The ROADTRIP

Cutting edge Technology with Innovative Designs and a Variety of Layouts to Choose from to Suit your Lifestyle, also Available in ATV models

The Vacationer Roadtrip Combines a High Quality Interior Design with a Rugged Exterior to Lead the Trend in Today's Market.

Enjoy the Freedom and Discover the Passion, Feel the Inspiration and the Excitement of our Beautiful Country in a Vacationer Road Trip Caravan

and Get away in style!..



Chassis

- Mesh on a frame
- Straight 2 arm Bumper Bar
- Spare Wheel
- One Piece Flooring
- 4x2 Main Bearers
- Outside step
- One Piece Floor
- 2" Chassis Raiser
- Straight Axles
- Rocker Suspension
- 15 x 235 tyres MT
- 10" brakes
- Supergal chassis
- Drop down legs
- Jacking Points
- 6" Aframe
- Gal Water Tank Gaurds

Electrical

- Belair 3400 Air conditioner
- 2 x 120 amp AGM Battery
- 24" TV and Swivel arm
- Double Din DVD Player
- 2 x 150W Solar Panel
- Outside marine speakers
- Digital TV wynguard antenna
- USB/12v point to seating
- Digital Water Level Gauges
- Outside TV & Power Outlet
- External Annex Lights
- Rearview Camera & Car Monitor
- Light & Power points in Robe Cut-outs
- Reading Lights
- 12 pin with Charge Wire
- Resettable fuse board
- Strip light in Step
- Ensuite Master Switch

Plumbing

- Ceramic basin
- Large Bowl Sink
- 2 x 95ltr Water Tanks
- Water Filter
- Gas Bayonett
- 28ltr Gas Electric HWS
- Outside Shower
- Ceramic toilet
- 2 x 9kg gas bottles
- Galvanised water tank Guards
- Tap protection on A frame
- 12V pump
- 3.2kg top load washing machine
- Herpo valve (Non-Return Valve)
- Tap Ware With Built in water filler
- 192L Thetford Fridge
- Full Oven (Recessed)

External

- LED Roof Hatch
- 4 Seasons Roof Hatch
- Rear External Shower Locker
- Rear External Generator hatch
- Checker Plate Wheel Spats
- Euro Double Glazed Windows
- Roll out awning
- Grab handles front and back
- Checker plate Stepwell
- Outside picnic table
- Front and Rear alu panels
- Black checker plate front and sides
- High Ridge Stuko Aluminium
- Stainless Steel Grab Handles
- Jmould in Moulded Stepwell
- Black LED Outside Step
- Smooth Composite Sides
- Awning Cradle

Internal

- Piano hinges to all Cupboards
- Contemporary Internal Doors
- Swift 23ltr microwave
- Innerspring Mattress
- Mini Grill
- Microwave
- Luxury Style Upholstery
- Foot Rests
- One Piece Fibre Glass Shower
- 2 x Towel Rails in Ensuite
- Full Insulation
- Vinyl Flooring
- Robe Cut-outs
- Soft close Drawer Runners
- Square Handles
- Robe Cut Outs