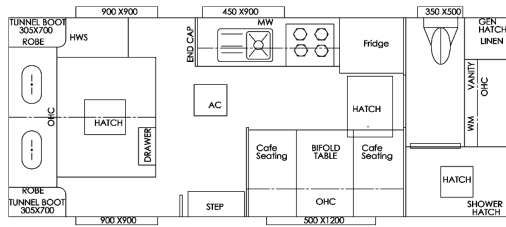
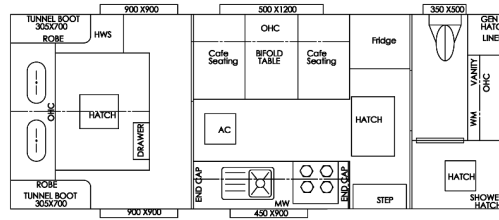


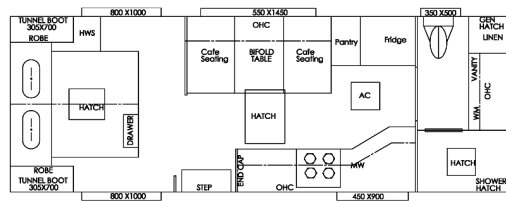
## Layouts



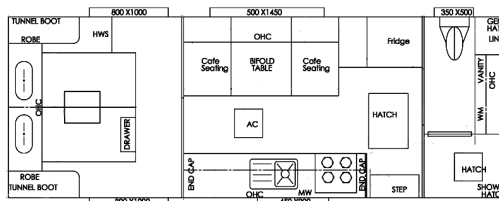
**180C**



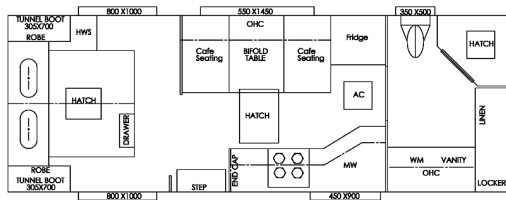
**190R**



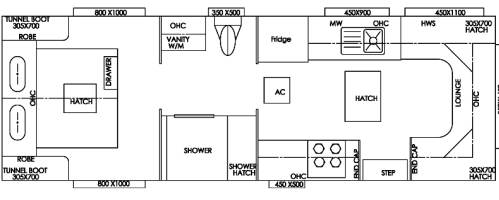
**206C**



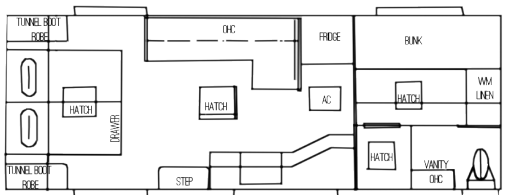
**21R**



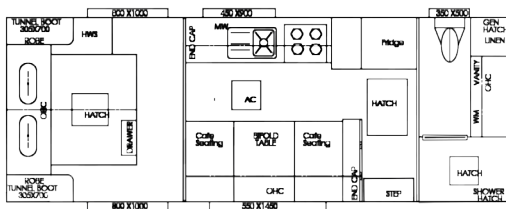
**210C**



**226R**



**226C (Family)**



**206R**

**Dealership:**



[www.vacationercaravans.com.au](http://www.vacationercaravans.com.au)

**HIGHLANDER**

# VACATIONER HIGHLANDER



## The Highlander

The Highlander is the Flagship of the Vacationer Company.

For the Ultimate Off-Road Experience in Australia's Extreme Conditions the Vacationer Highlander has been Designed to Give You the Highest of Comfort to Enjoy our Beautiful Australian Outback.

Ultimate Maximum Strength in Structure for Peace of Mind to Discover the Passion, get the Inspiration and feel the Excitement that our Great Country has to offer in the Comfort of a Vacationer Highlander Caravan

Get Away in Ultimate luxury and Style..

## Chassis

Offroad Chassis  
6" frame extended past suspension  
450 mm extended A frame  
Mesh on a frame  
Generator Tool Box  
Straight 4 arm bbar & Jerry can  
Spare wheel  
Nudge Bars  
Marine Flooring  
4x2 Main bearers  
Outside step  
Checker Plate Tank Gaurds  
6" raiser  
Control Rider Twin Shock  
Off-Road Suspension  
16" x 265 Micky Thompson Mud Terrain Tyres  
12" offroad brakes  
Supergal Chassis  
Drop down legs  
One piece floor  
Recessed Alko Off-Road Lock Pin Coupling  
ESC Stability Control  
Recovery Points  
Skid Braces

## Electrical

Belair 3400 Roof Air Conditioner  
2 x 120 amp AGM Battery  
TV and Swivel arm  
Double Din DVD Player  
2 x 150W Solar Panels  
Waeco rpd 218 compressor fridge  
Outside marine speakers  
Digital TV wynguard antenna  
USB/12v point to seating  
Digital Water Level Gauges  
Outside TV & Power Outlet  
External Annex Lights  
An nexa Light Offside  
Reversing Camera with monitor  
Light & Power points in Robe  
Cut-outs  
Reading Lights  
External TV Entertainment  
Work Lights front and back  
Strip light in Step  
Resetable Fuse Board  
40 Amp Solar Regulator  
2 x Sirocco Fans

## Plumbing

Ceramic basin  
Large Bowl Sink  
2 x 95ltr Water Tanks  
Gas Bayonett  
28ltr Gas Electric HWS  
Outside Shower  
Ceramic toilet  
2 x 9kg gas bottles  
Checker Plate water tank Guards  
Tap protection on A frame  
2 x 12V pump  
3.2kg top load washing machine  
Herpo valve (Non-Return Valve)  
New Tap Ware with Built in Filter  
Full Oven  
65 LTR Drinking Tank Between T/S  
95ltr Grey Water Tank

## External

2 x LED Roof Hatches  
Shower Locker  
Generator hatch  
Checker Plate Wheel Spats  
Euro Double Glazed Windows  
Roll out awning  
Grab handles front and back  
Checker plate Stepwell  
Outside table  
Checker plate front and sides  
Ribbed Aluminium  
Picnic Table  
Checker Plate  
Box with Gen Slider  
High Ridge Stuko Aluminium  
Stainless Steel Grab Handles  
J Mould in Moulded Stepwell  
Smooth Composite Front & Back  
Awning Cradle

## Internal

Heavy Duty OHC Spring loaded hinges  
Piano hinges lower cupboards  
Contemporary doors  
Swift 23ltr microwave  
Innerspring Mattress  
Luxury Style Upholstery  
2 x Towel Rails  
Full Insulation  
Vinyl Flooring  
Foot Rests  
Robe Cut-outs  
Soft close Drawer Runners  
Fix Upholstery  
Head Rests  
Bathroom Accessories  
Square Handles