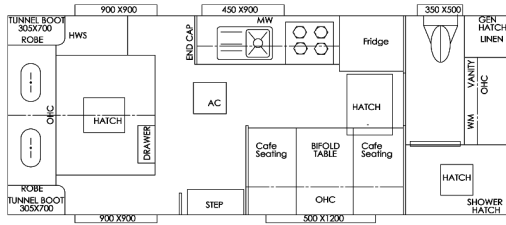
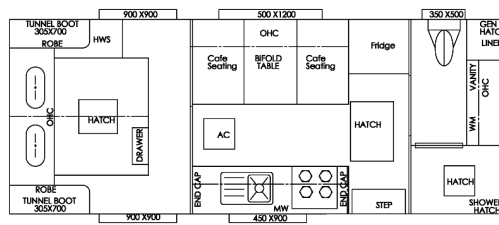


Layouts

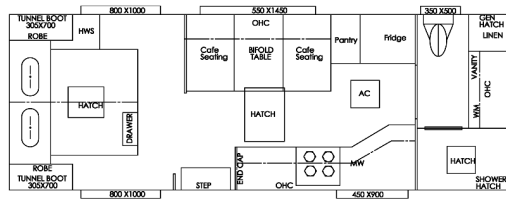


180C

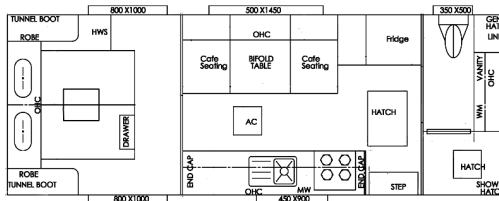
Please note that the 180C has 16" Wheels 12" Brakes



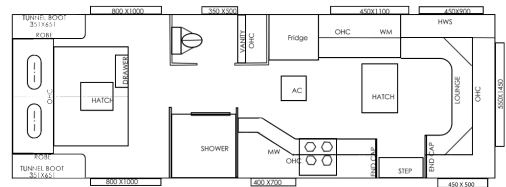
190R



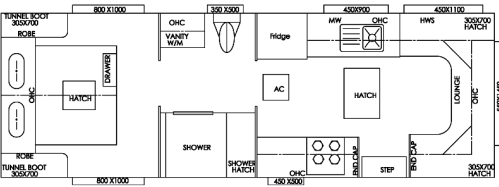
206C



21R

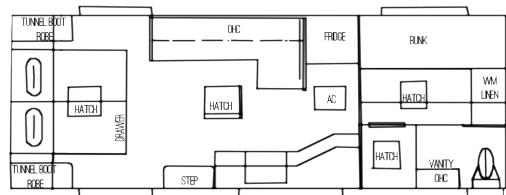


22R



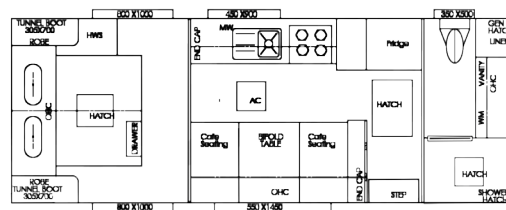
226R

Please note that the 226R model comes on a raised chassis / Flat floor, lowered coupling, 15" 235 Tyres, LED step light, Strip light around club lounge, External TV locker, 2 x 32" Built in TV, 4kg Front Loader Washing Machine and 2 x Rear External Hatches



226C (Family)

Please note that the 226C has a 6" A Frame 4Kg Washing Machine



206R

Dealership:



www.vacationercaravans.com.au

ESCAPE

VACATIONER ESCAPE



The Vacationer Escape

Advanced to a more up market model with cutting edge technology with innovative designs.
Variety of layouts to choose from and packaged to suit your lifestyle.
The Vacationer Escape Caravan is Very Well Suited for our Australian Highways.
The Vacationer Escape combines a High Quality Interior design with a Rugged Exterior to set the Trend and be Advanced in the Caravan Industry

Enjoy the freedom in a Vacationer Escape Caravan!And Go Be Amazing!

Chassis

- Mesh A-Frame
- 2Arm 90° Bumper Bar
- Spare Wheel
- 4 x 2 Main bearers
- 4" Extended A Frame
- 2" Raiser
- Straight Axel Rocker Suspension
- 15" x 205 Tyres
- 10" Brakes
- Super Gal Chassis
- Drop Down Legs
- One Piece Flooring
- Gal Water Tank Guards
- Drop Down Legs

Electrical

- Belair 3400 Air conditioner
- 1 x 120 amp AGM Battery
- 24" TV and Swivel arm
- Double Din DVD Player
- 1 x 150W Solar Panel
- Outside marine speakers
- Wynguard antenna
- USB/12v point at Dinette
- Digital Water Level Gauges
- Outside TV & Power Outlet
- 2 x External Annex Lights
- Rearview Camera & Car Monitor
- Light & Power points in Robe-Cut-outs
- Reading Lights
- 12 pin with Charge Wire
- Resettable fuse board
- Usb Point at Dinette

Plumbing

- Ceramic basin
- Large Bowl Sink
- 2 x 95ltr Water Tanks
- Water Filter
- Gas Bayonett
- 28ltr Gas Electric HWS
- Outside Shower
- Ceramic toilet
- 2 x 9kg gas bottles
- Tap protection on A frame
- 12V pump
- 3.2kg top load washing machine
- Herpo valve (Non-Return Valve)
- Full Oven
- 192L Thetford Fridge

External

- 2 x LED Roof Hatches
- Double Shower Lockers
- Checker Plate Front
- Lower Smooth Composite sides
- Checker Plate Wheel Spats
- Roll Out awning
- Stainless Steel Grap Handles
- J moulded Step Well
- Picnic Table
- Euro Double Glazed Windows
- Insulsted Roof & walls
- Pull Outside step
- Awning Cradle

Internal

- Large Bed Head
- Head Bumper
- Fix Back Upholstery
- Head Rests
- Bathroom Accessories
- 2 x Towl Rails in Ensuite
- Heavy duty OHC Spring loaded Hinges
- Piano Hinges to all Cupboards
- Contemporary Internal doors
- Innerspring Mattress
- Luxury Upholstery
- Swift 23L Microwave
- Vinyl Flooring
- Foot Rests
- Soft Close Runners
- Square Handles
- Robe Cutouts